

## Getting Started

For new users, this section explains how to install and operate the common component.

## Installation of Common Component

The eGov Framework supports two methods: to install selectively using the Wizard provided in Eclipse; and to install using the distribution file provided on the eGov standard framework portal.

## Using Development Environment

- Refer to the Development Environment Guide [Common Component Installation Guide \(Development Environment\)](#)

## Using the eGov Standard Framework Portal

### Select and download

1. Download the Common Component from the eGov Standard Framework portal.

- Click Download>Common Component and move to download page.

eGovFrame Portal  
전자정부 표준프레임워크

행정안전부  
MINISTRY OF PUBLIC ADMINISTRATION AND SECURITY

검색어를 입력해 주세요

검색

홈 | 로그인 | 사이트맵 | ENGLISH

표준프레임워크 개요    다운로드    가이드    자료실    개발자지원    오픈커뮤니티

실행환경 | 개발환경 | 운영환경 | **공통컴포넌트** | 공유서비스맵

### 전자정부 표준프레임워크

전자정부 서비스 품질향상 및 정보화 투자의 효율성 향상

- 전자정부 응용 SW 구현의 생산성 향상 및 재사용 촉진으로 예산 절감 등 정보화 투자의 효율성 제고
- 중소기업에 전문화, 선진화된 개발프레임워크를 공개, 공유함으로써 정보화 능력의 상향 표준화로 전자정부 서비스 품질 향상 및 중소기업 경쟁력 향상
- 전자정부 서비스 구현의 표준화된 방법론 제공으로 향후 가속화될 통합 및 연계 중심의 새 정부 국가정보화 추진의 기반환경을 제공

- Move to download board by choosing the newest Common Component.

2011.10.31 : 공통컴포넌트의 최신버전은 2.0.0이며, 이전 버전에 비하여 다음과 같은 점들이 개선되었습니다.

- Common 배포 파일의 최소화  
1.0.0에서 존재하던 Common 배포 파일을 없애고 반드시 포함되어야 하는 패키지를 최소화함
- 참조관계의 개선  
인증, 게시판 및 관련 컴포넌트, 게시판과 커뮤니티 등의 참조관계를 최소화하여 필요한 컴포넌트만 사용할 수 있도록 구성함
- 배포파일의 기능적 완결성 제공  
참조관계에 따른 배포 파일을 구성하여 배포 파일 단위로 실행되는 공통컴포넌트를 확인할 수 있음

#### 모바일 공통컴포넌트 2.0.0 다운로드

릴리즈 일자 : 2011.10.31

- 업무 구분에 따른 모바일 공통 컴포넌트 2.0.0
- 모바일 공통컴포넌트 2.0.0 다운로드 맵

#### 공통컴포넌트 2.0.0 다운로드

릴리즈 일자 : 2011.10.31

- 공통컴포넌트 2.0.0 all-in-one 배포파일
- **공통 기술 및 요소기술에 따른 공통컴포넌트 2.0.0**
- 공통컴포넌트 2.0.0 다운로드 맵

#### 모바일 공통컴포넌트 1.0.0 다운로드

릴리즈 일자 : 2011.09.30

- 업무 구분에 따른 모바일 공통 컴포넌트 1.0.0

#### 공통컴포넌트 1.0.0 다운로드

릴리즈 일자 : 2009.11.30

- 공통 기술 및 요소기술에 따른 공통 컴포넌트 1.0.0
- 공통컴포넌트 1.0.0 다운로드 맵

#### Quick menu

공지사항

행사안내

FAQ

Q&A

용어사전 서비스

다운로드 서비스



TOP

2. Choose the search option as a title and search the Common Component and download the v2.0.

- Choose search option as a title and search the intended Common Component.

## 공통컴포넌트목록

Search

번호	대분류	카테고리	제목	등록자
1	협업	주소록/명함록	주소록관리	관리자
2	협업	주소록/명함록	<a href="#">주소록관리v2.0</a>	관리자

1

- Download the source file in the chosen v2.0.

### 기능정보

개요	개인, 부서, 회사 주소록에 대한 정보를 관리하는 기능을 제공한다.
관련컴포넌트	1. TC-US-UM-02 회원관리 2. TC-CO-AD-01 명함관리
제약조건	기 등록된 사용자 및 명함에 대해서만 주소록구성원을 할 수 가 있다.
비고	

### 세부기능정보

순번	기능명	기능설명
등록된 세부기능명세서 항목이 없습니다.		

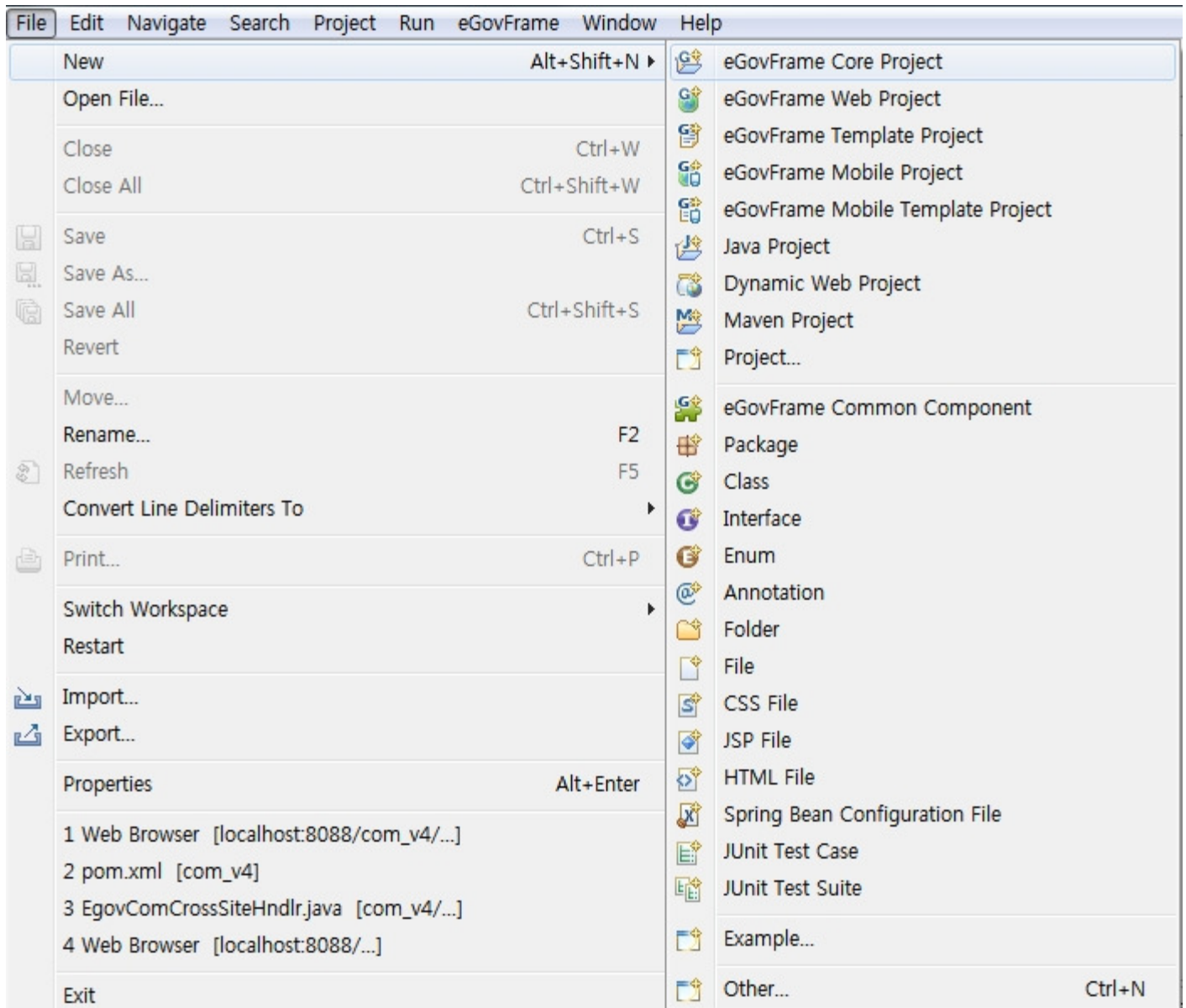
### 데이터항목정보

입출력구분	항목	TYPE	설명
등록된 입출력데이터 항목이 없습니다.			

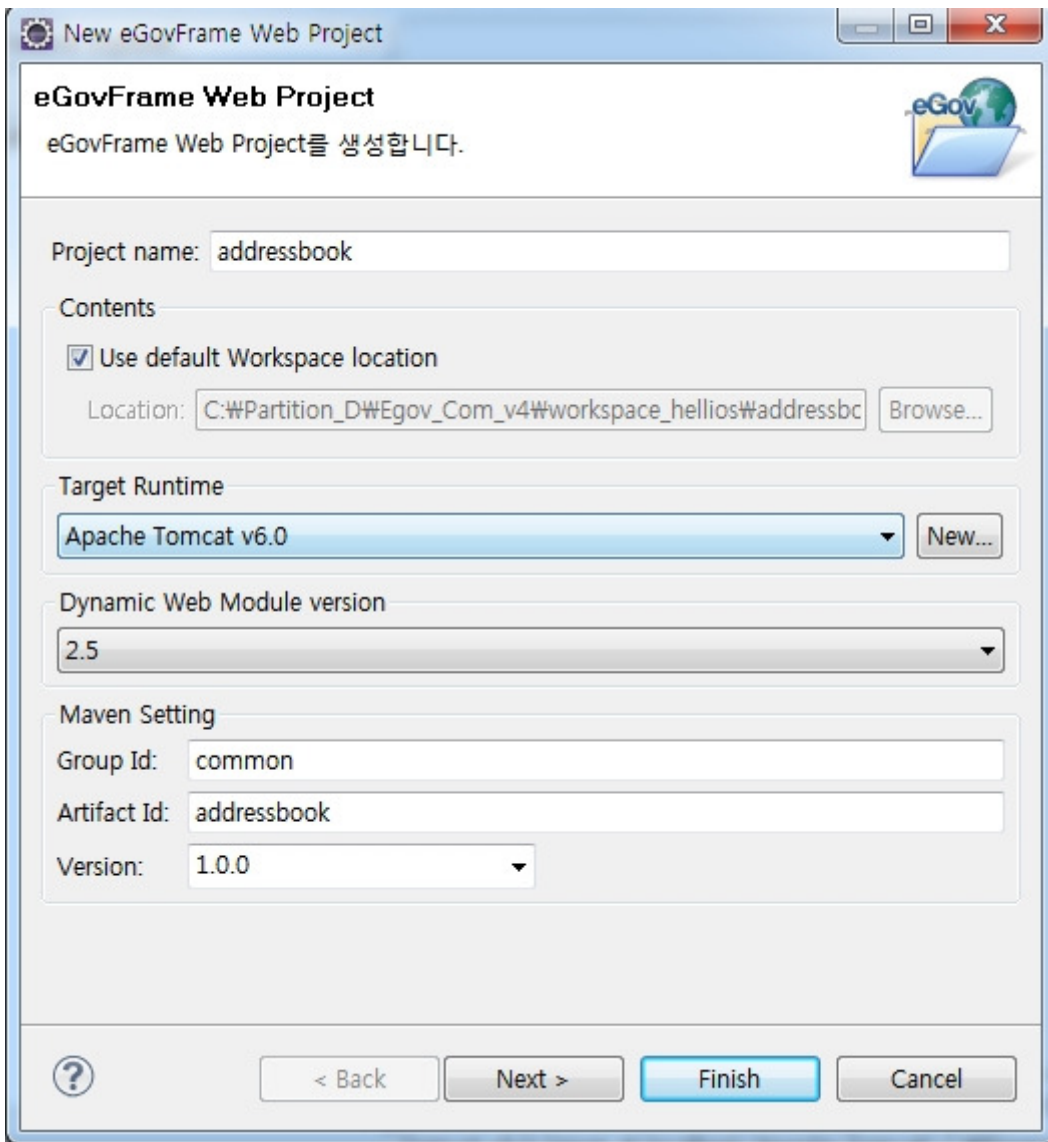
### 첨부파일

소스파일	<a href="#">egovframework-addressbook-2.0.0.zip [865 byte]</a> 다운로드
실행파일	첨부파일된 파일이 없습니다.
가이드	첨부파일된 파일이 없습니다.

1. Run the eGov Standard Framework development environment, Eclipse (explained as Helios) and choose FILE>NEW>eGovFrame Web Project to generate new project.

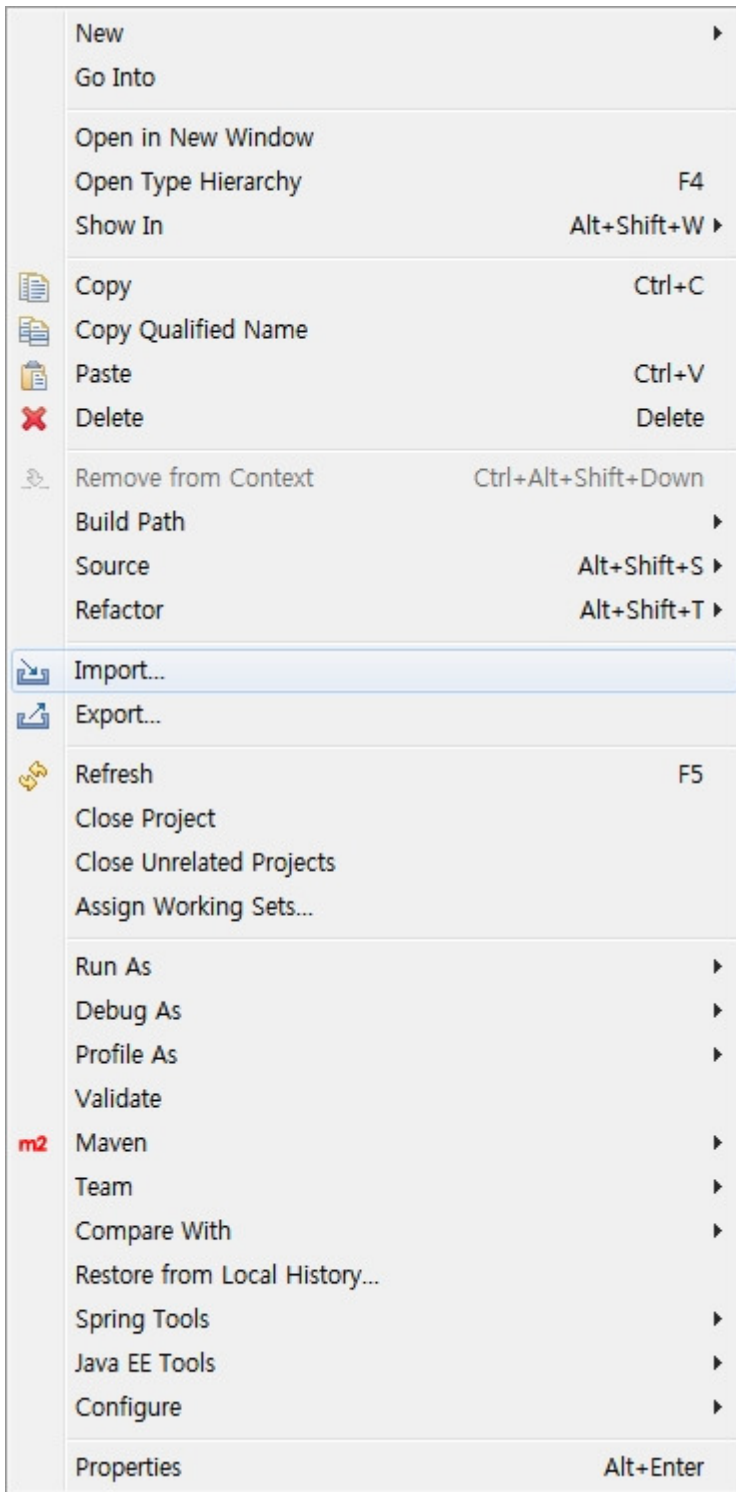


2. When the project generation wizard is run, insert the project name and group ID. To use jsp-api used in Common Component, select Apache Tomcat v6.0 additionally for target runtime. Other servers that support specifications of JSP2.1, Servlet 2.5 other than Apache Tomcat can be chosen and when there is no configured server, new server can be configured using the 'New' button.



3. Click on 'Next' and 'Finish' without selecting 'Generate Exmample'. (When there is a sample project, the Spring configuration crashes. Hence, it requires separate revision).

4. Choose newly generated project and select 'import' menu with the right click.



5. Choose Archive File from the General tab, click on 'Browse' and choose the downloaded Common Component.

Import

### Select

Import resources from an archive file into an existing project.



Select an import source:

type filter text

- General
  - Archive File
  - Existing Projects into Workspace
  - File System
  - Preferences
- CVS
- EJB
- Java EE
- Maven
- Plug-in Development
- Remote Systems
- Run/Debug
- SVN
- Tasks
- Team



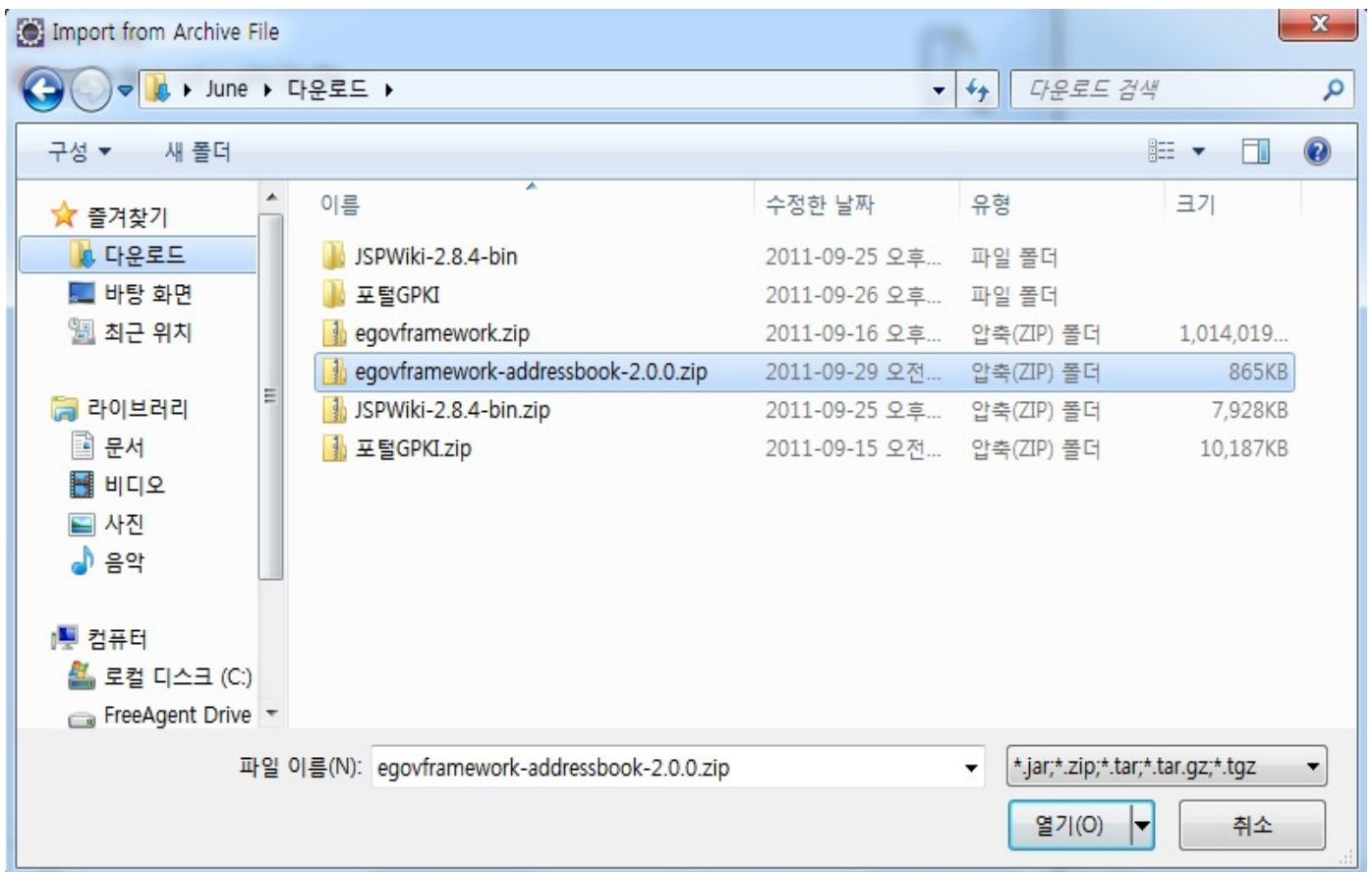
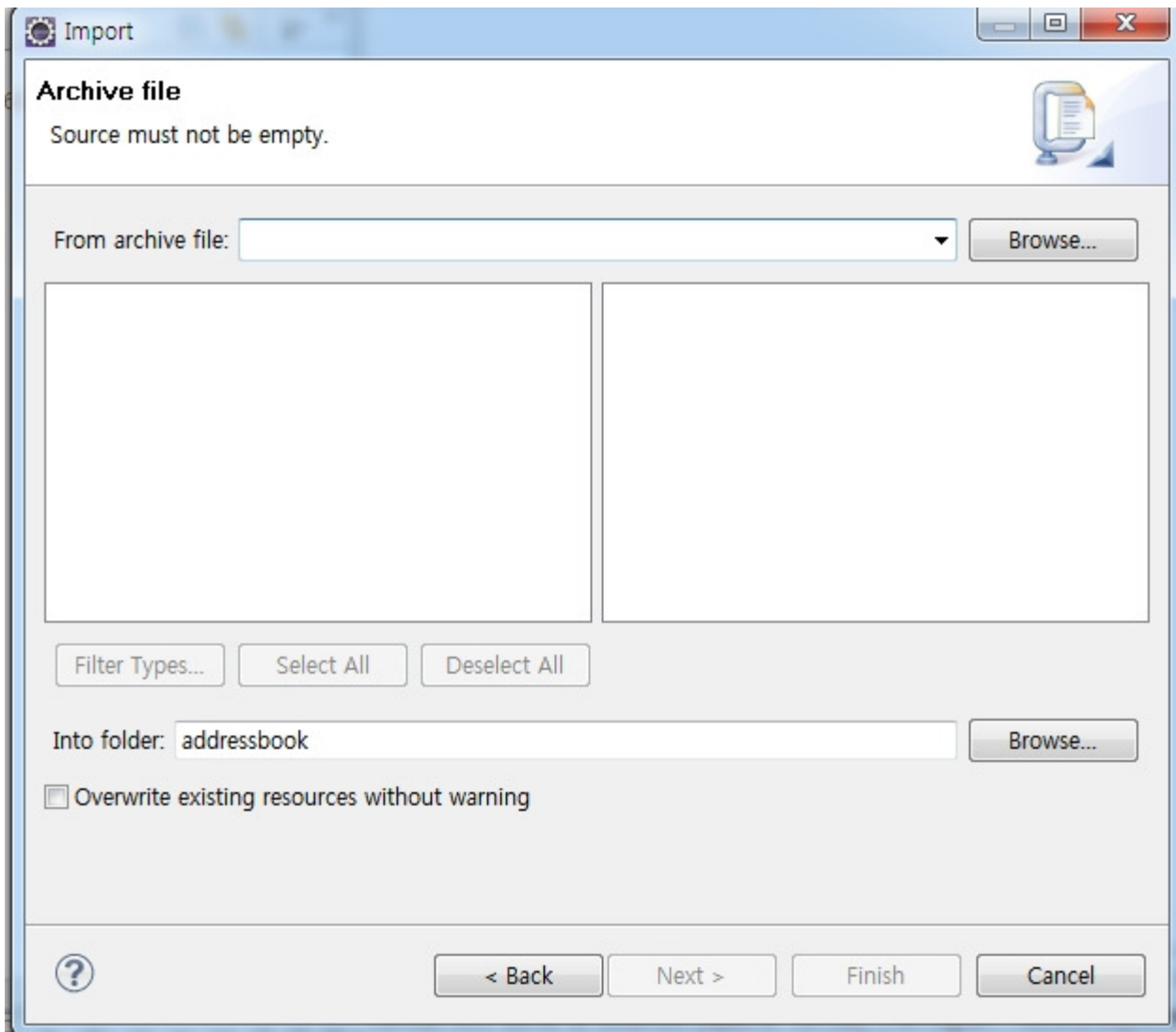
< Back

Next >

Finish

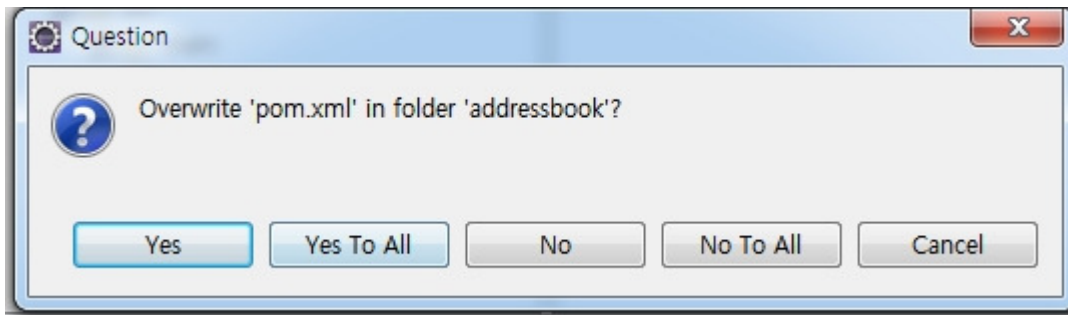
Cancel





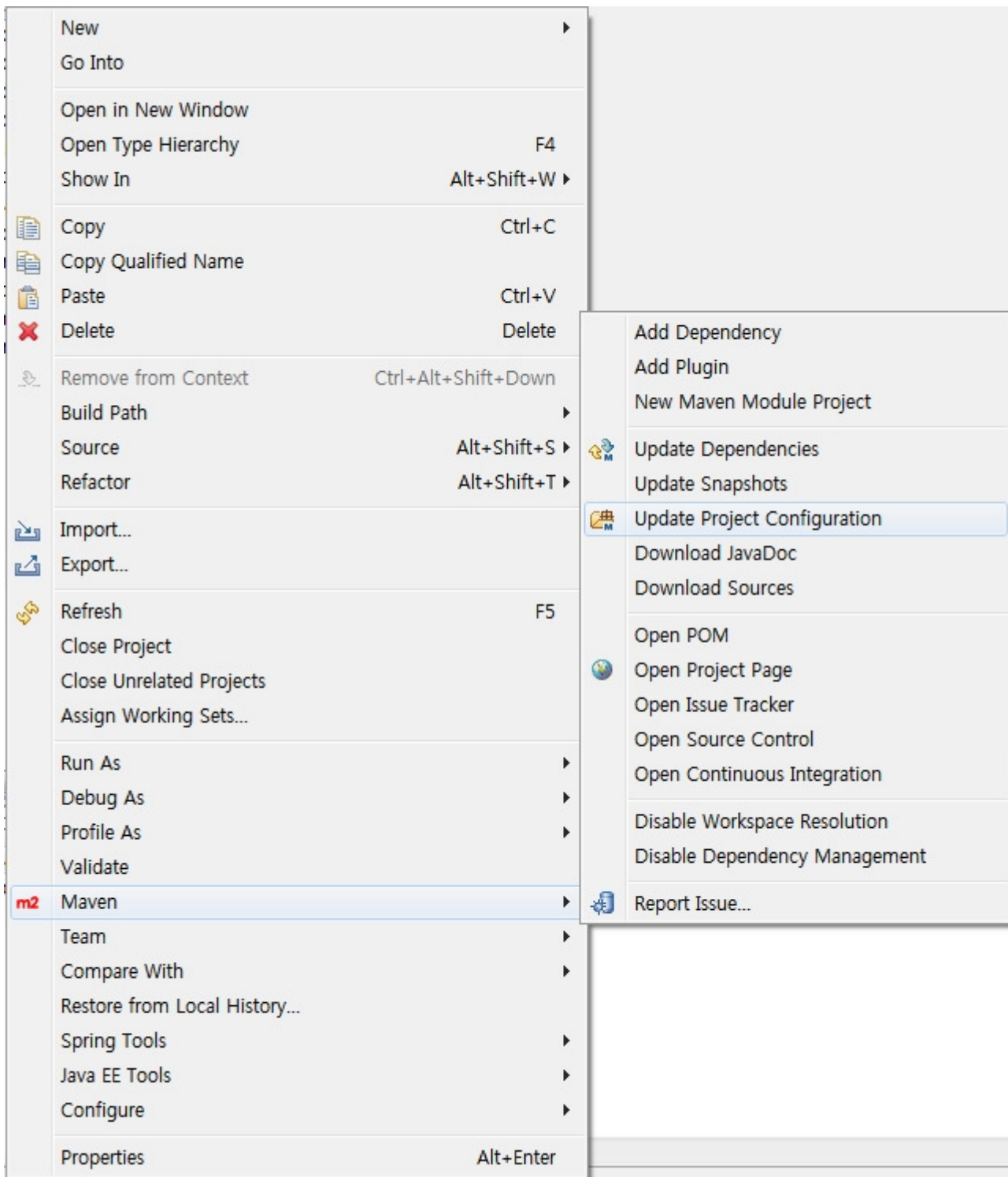


6. You can choose from that you want to import from the Wizard. Since you've created a new project, click 'Finish' without changes to configuration. It will ask if you want to overwrite due to pom.xml. Choose 'Yes to all' because it is a new project. (When it is not a new project, the pom.xml and Spring configuration file should be merged.)

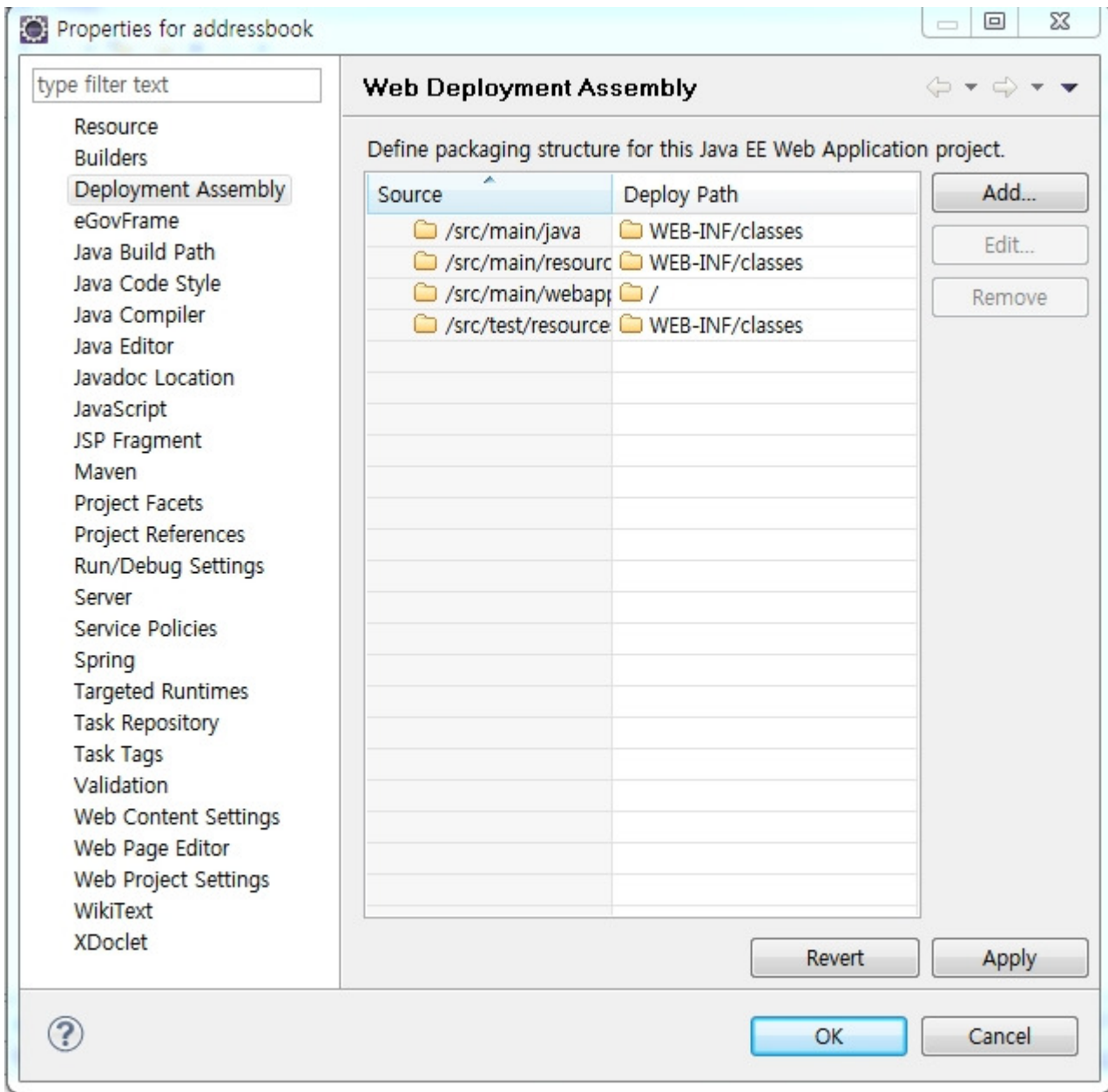


## Configuration

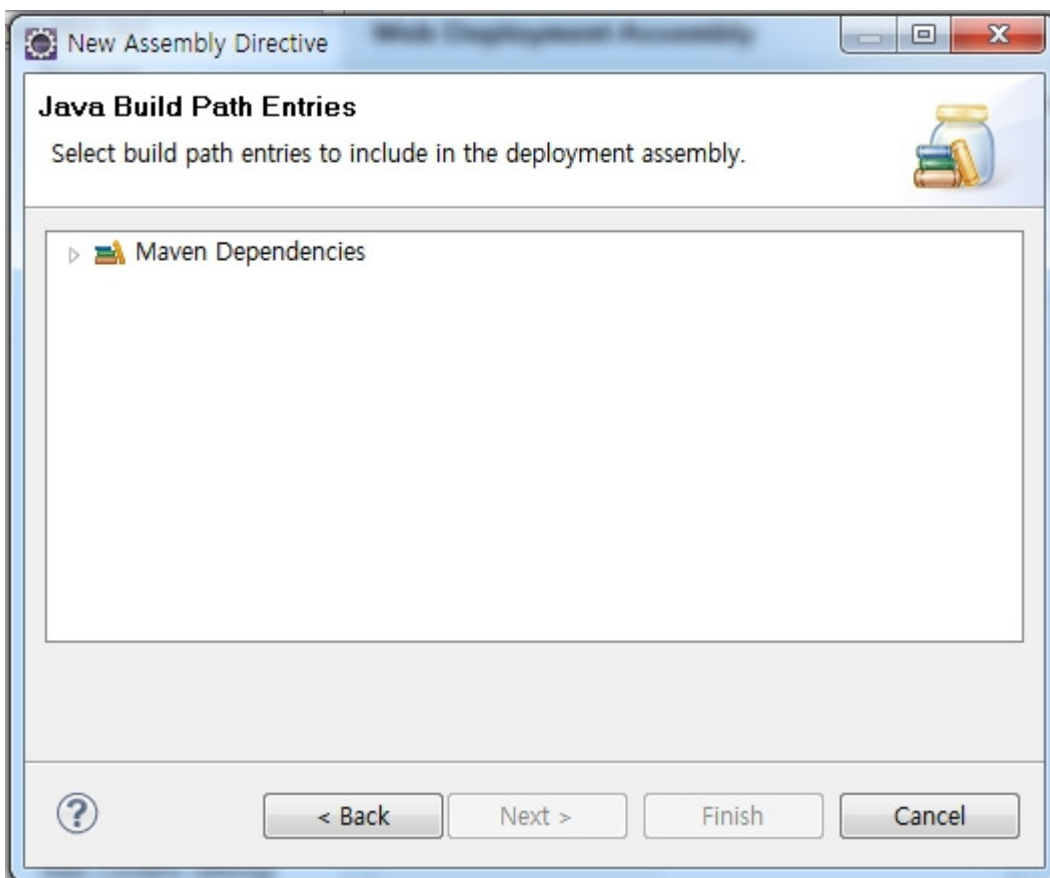
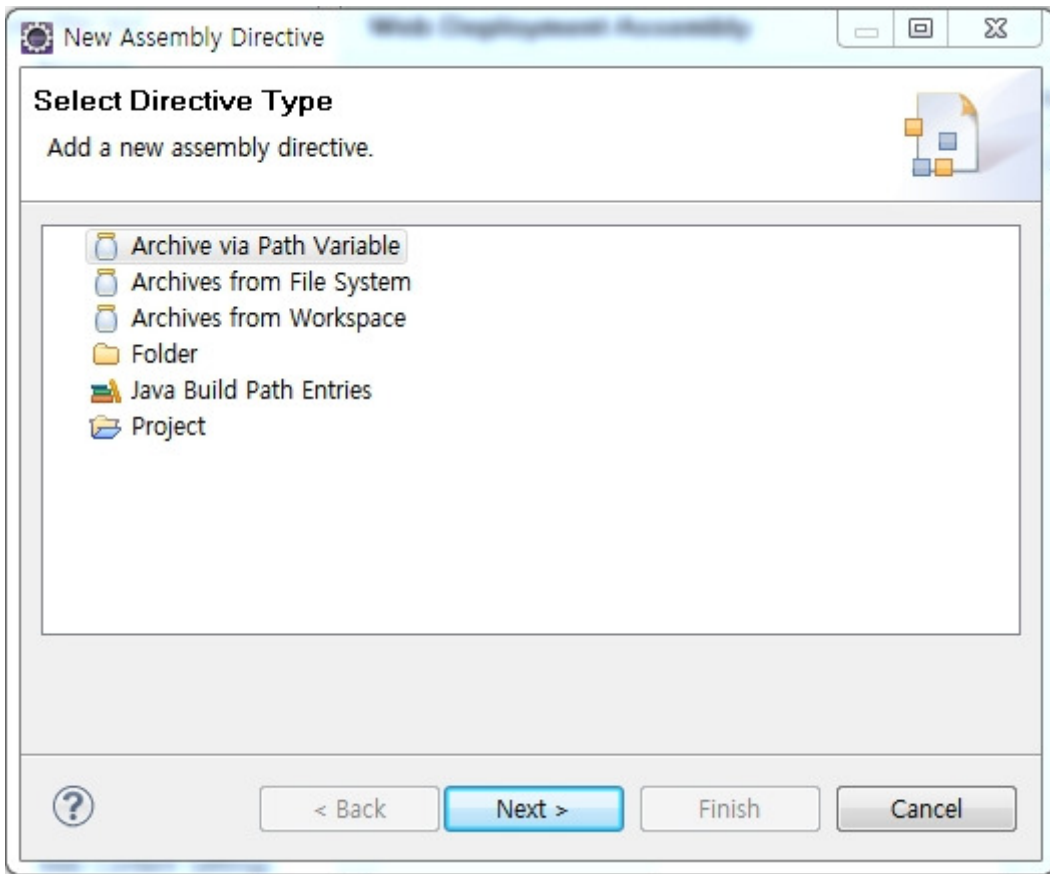
1. To apply the configuration of the Common Component to the project, select the project and right click to choose the Maven menu. Click 'Update Project Configuration' to reflect the maven configuration of pom.xml to the project. You will see the problem of errors since there is no jar file that refers to the Common Component is gone.



2. The configuration should be executed to distribute the jar file configured in the Maven Dependencies to the WTP plug-in server. First, right click on the project and choose the properties tab. Choose the deployment assembly tab and click on 'Add' from the window on the right. (It is only relevant to Eclipse Helios version and it does not need to be executed in Ganymede version.)

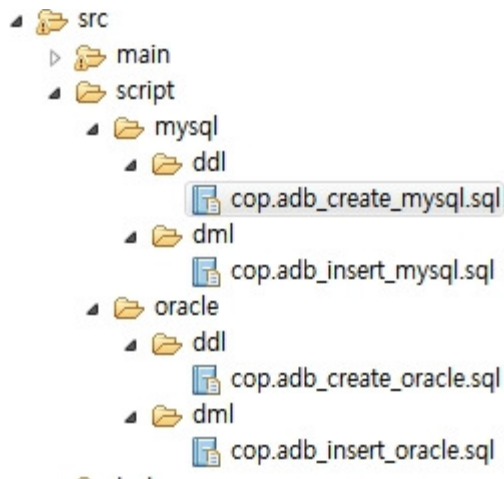


3. Select 'Java Build Path Entries' on the directive type and Maven Dependencies, and click 'Finish'. (It is only relevant to Eclipse Helios version and it does not need to be executed in Ganymede version.)



4. Run DB script to run the Common Component. DDL/DML files are existent as a package name under the src/script folder by each DB. Run the SQL script on the database you wish to use and input table generation and basic data. Since the mysql database is set as default, only DbType of the globals.properties(src/main/resources/egovframework/egovProps/globals.properties file) should be changed to database to change the database. For further details, refer to the data source of [Common Component Configuration \(context-egovuserdetailshelper.xml, web.xml, datasource\)](#).

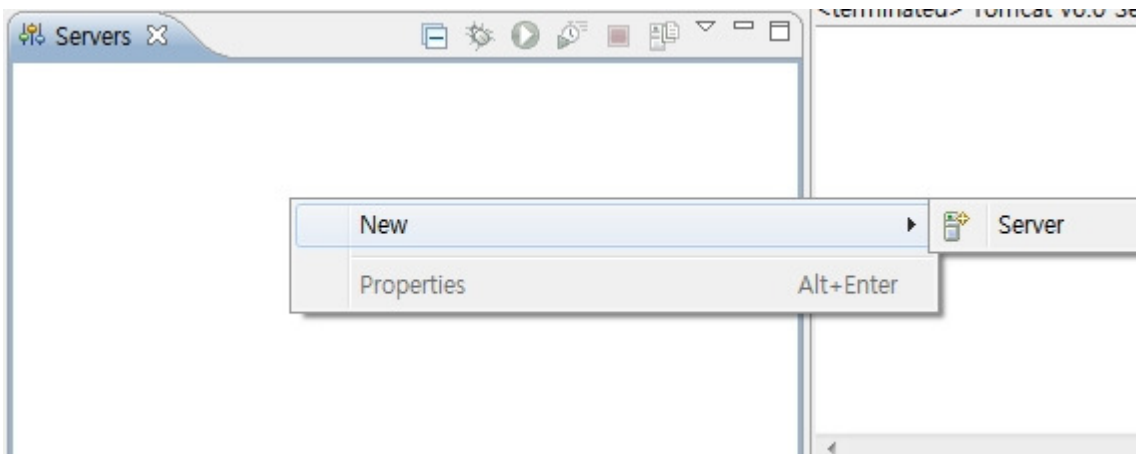
On the Oracle database, the `NLS_LENGTH_SEMANTICS` parameter configuration is set as byte, thus, when saved in Korean, the length can exceed by three folds. It should be converted to char for generating the table.



5. Default configuration is as above. For configuration added to each component, refer to each component guide.

### Run Common Component

1. When default and additional configuration is complete, register and run the Common Component to the server plug-in for confirmation. To run the Common Component to the registered server, you must first register the server. In this example, the Common Component is run using Tomcat6.0. To add Tomcat6.0, right click on the sever tab and choose `New>Server`. Select Tomcat6.0 from the server on the screen. You will see registering project by choosing Tomcat and here you choose the project that imported the Common Component.



### Define a New Server

Choose the type of server to create



[Download additional server adapters](#)

Select the server type:

type filter text

- Tomcat v4.0 Server
- Tomcat v4.1 Server
- Tomcat v5.0 Server
- Tomcat v5.5 Server
- Tomcat v6.0 Server
- Tomcat v7.0 Server

Publishes and runs J2EE and Java EE Web projects and server configurations to a local Tomcat server.

Server's host name: localhost

Server name: Tomcat v6.0 Server at localhost

Server runtime environment: Apache Tomcat v6.0

[Add...](#)

[Configure runtime environments...](#)

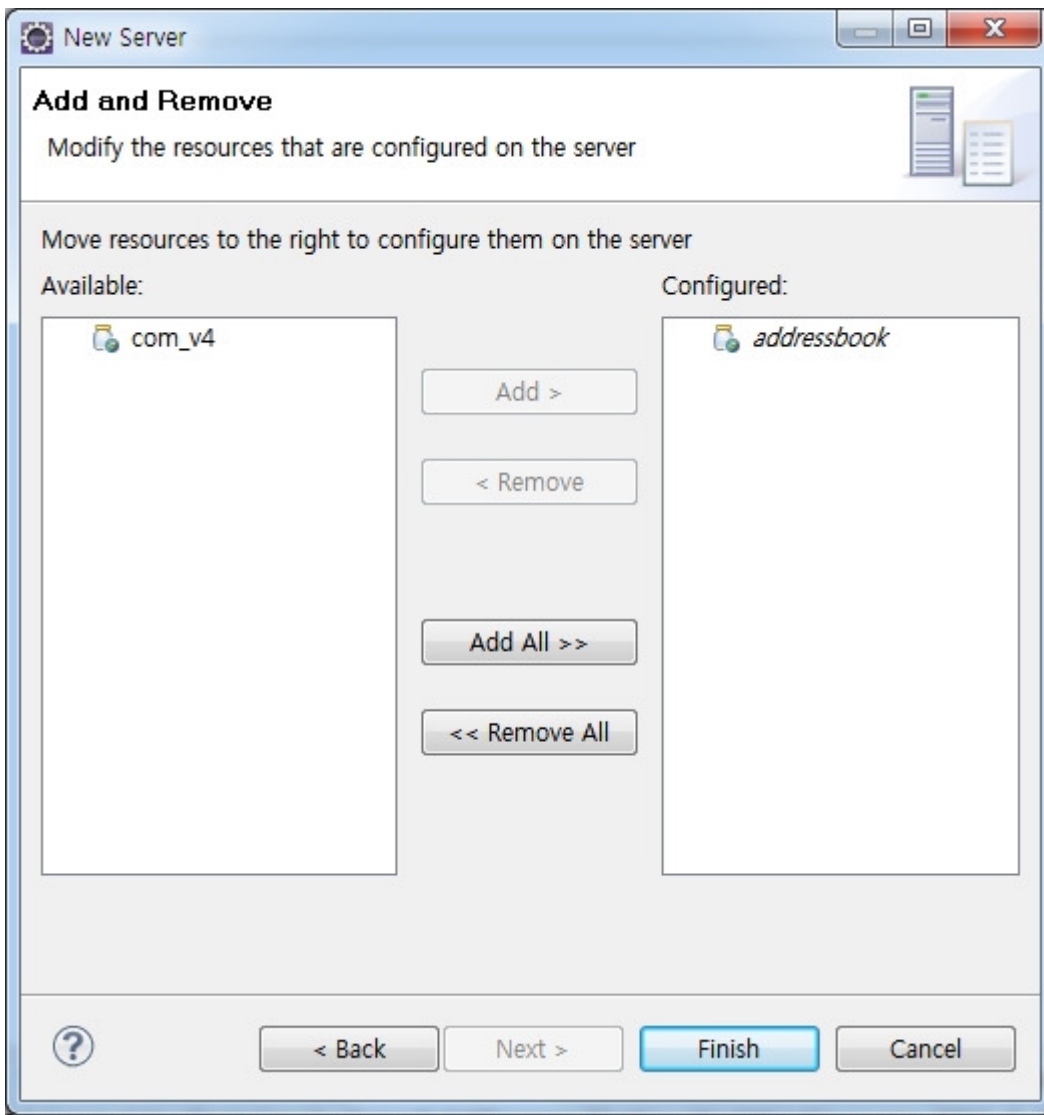


< Back

Next >

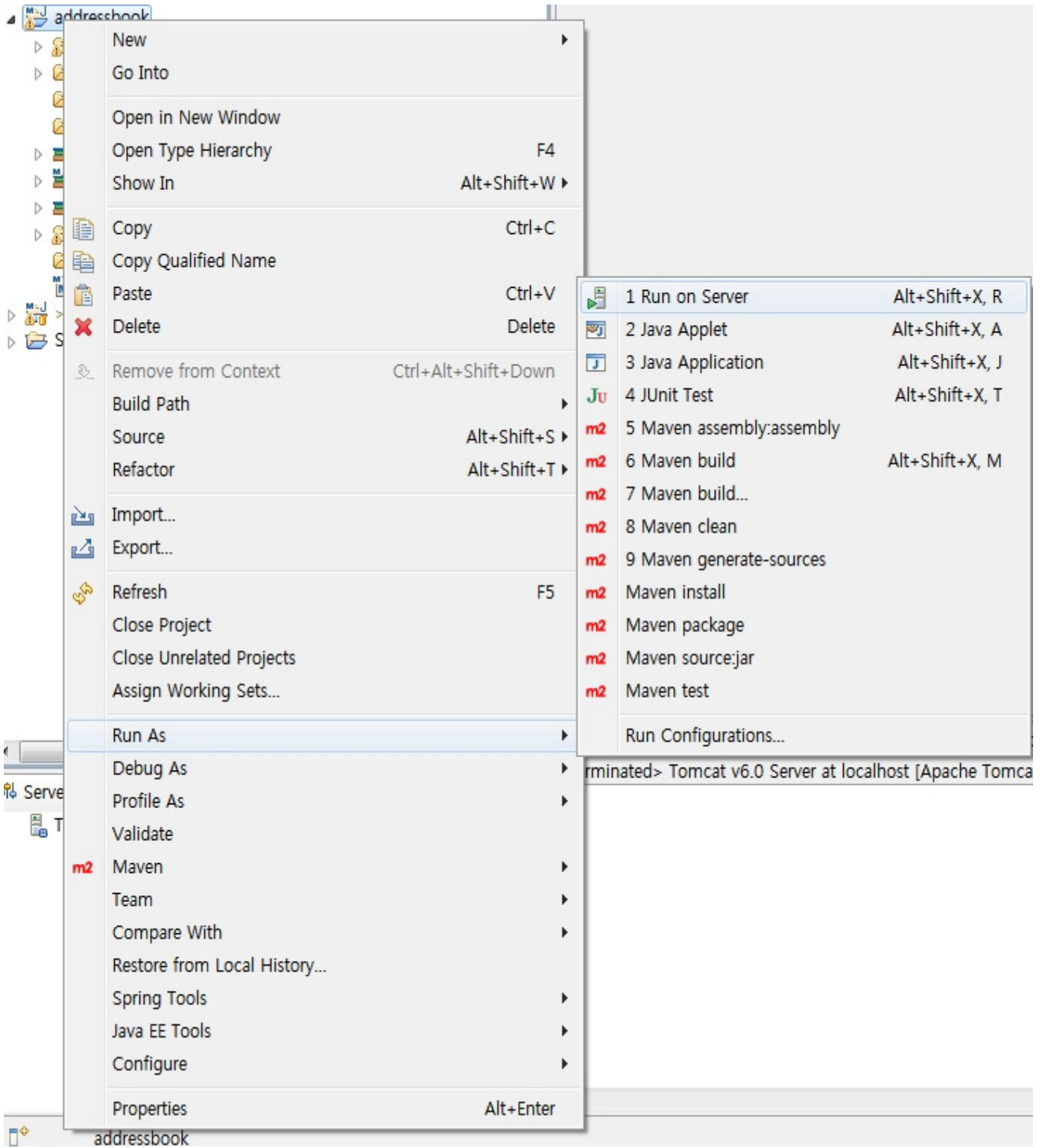
Finish

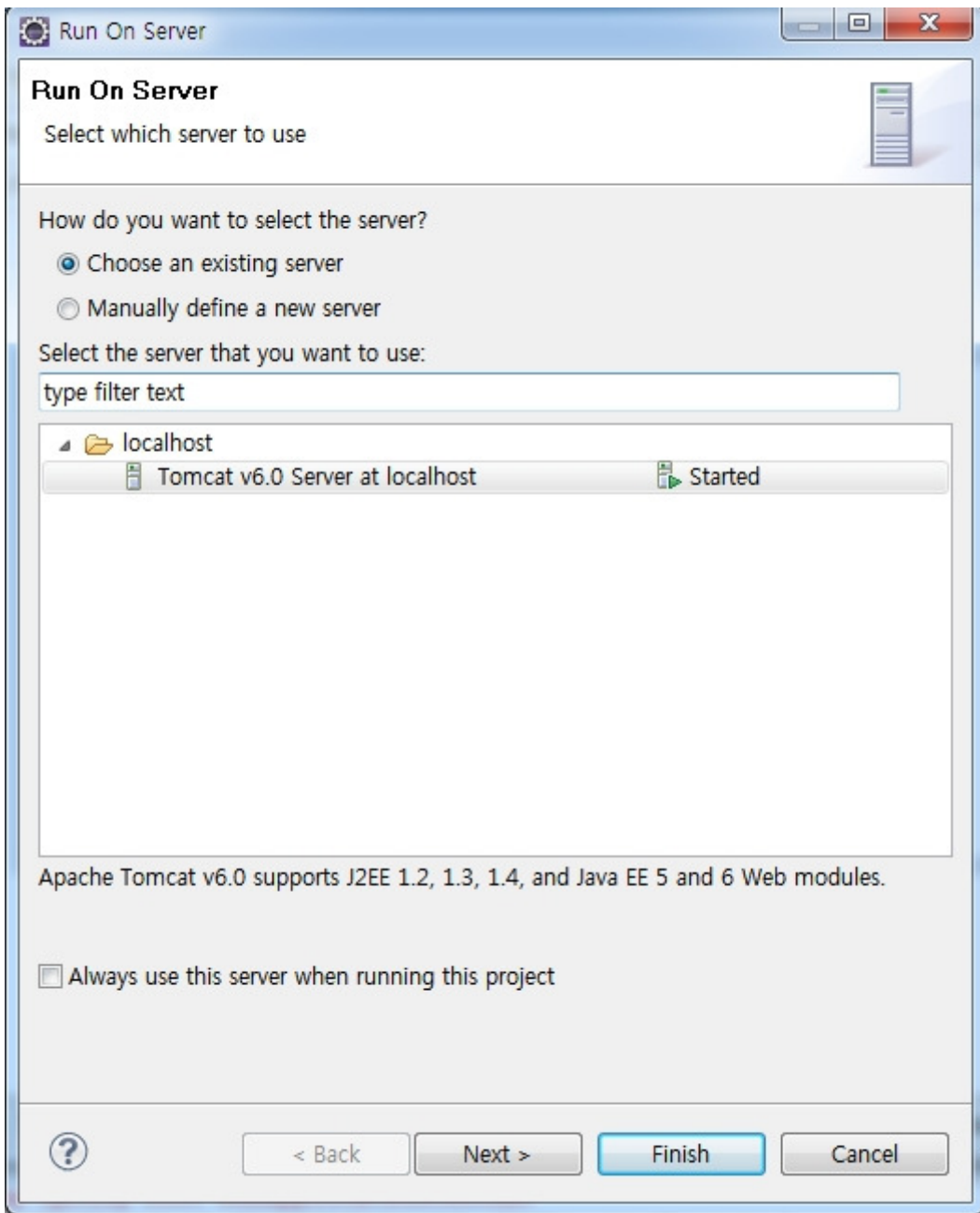
Cancel



2. Lastly, right click on the project to run the project on the server, and click on 'Run On Server' on the run as tab to view the screen that runs the Common Component.







3. When the Common Component is deployed successfully, you can see the screen below. Each component is distributed to use dummy users as default. For login related configuration, refer to [Common Component Configuration \(web.xml, context-egovuserdetailshelper.xml, datasource\)](#)

